

Working copy of the Definitive Map

30/09/2007



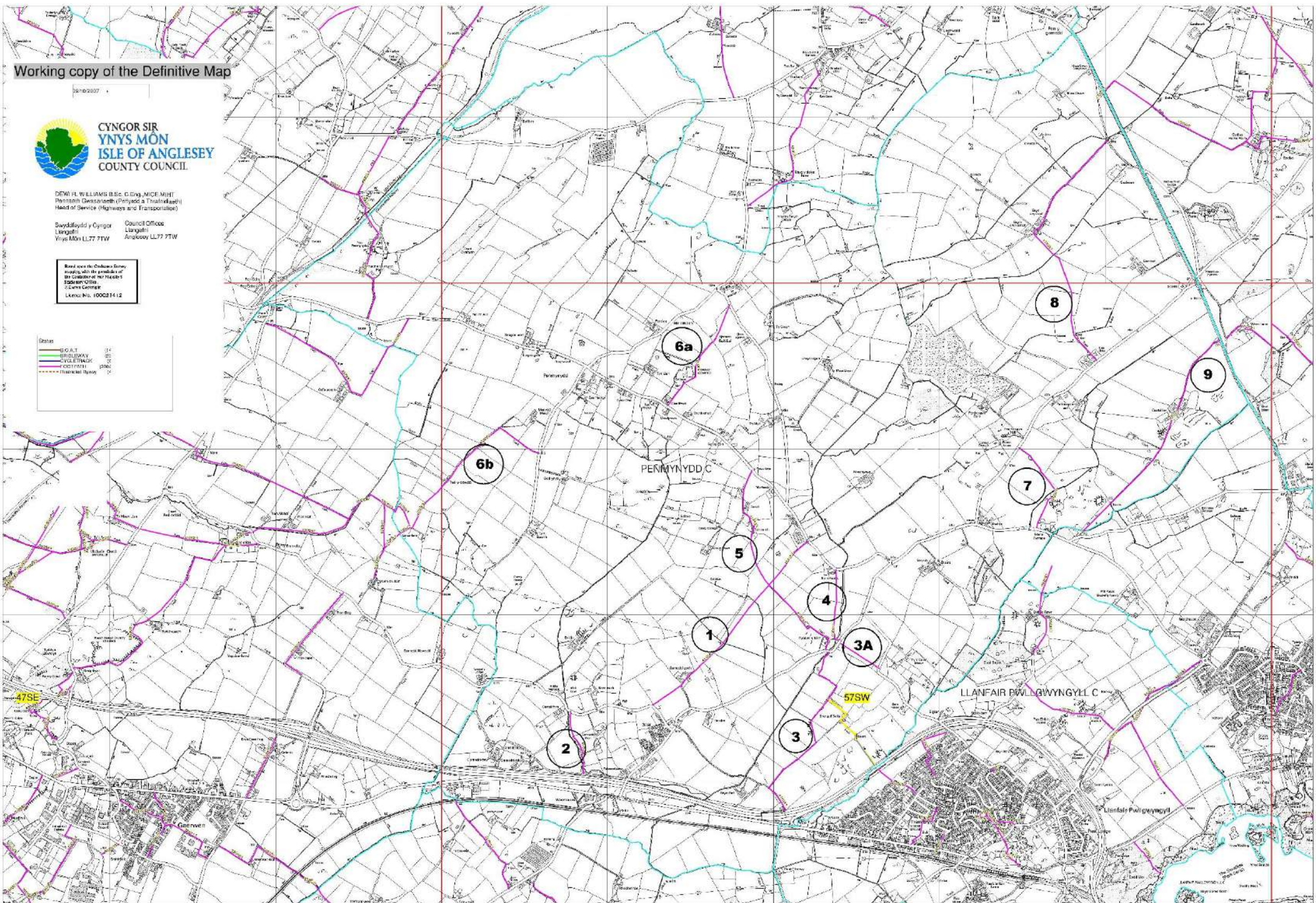
CYNGOR SIR  
YNYS MÔN  
ISLE OF ANGLESEY  
COUNTY COUNCIL

DEW H. WILLIAMS B.Sc. C.Eng. MICE. MHT  
Penrhifft Gwastrawth (Pentref a Thraflwyth)  
Head of Service (Highways and Transport)

Swyddfaidd y Cynghor  
Llangefni  
Ynys Môn LL77 7TW  
Council Offices  
Llangefni  
Anglesey LL77 7TW

Based on the Ordnance Survey  
mapping with the permission of  
Dr Colborne at No 7162-5  
3300th Office  
Caversham Centre  
Licensing No. 100023412

Status	
	ROAD
	WATERWAY
	CYCLEWAY
	FOOTWAY
	Historical Rights





1

1

Star

2

2

Pentre Pandy Shepherds Huts Glamping

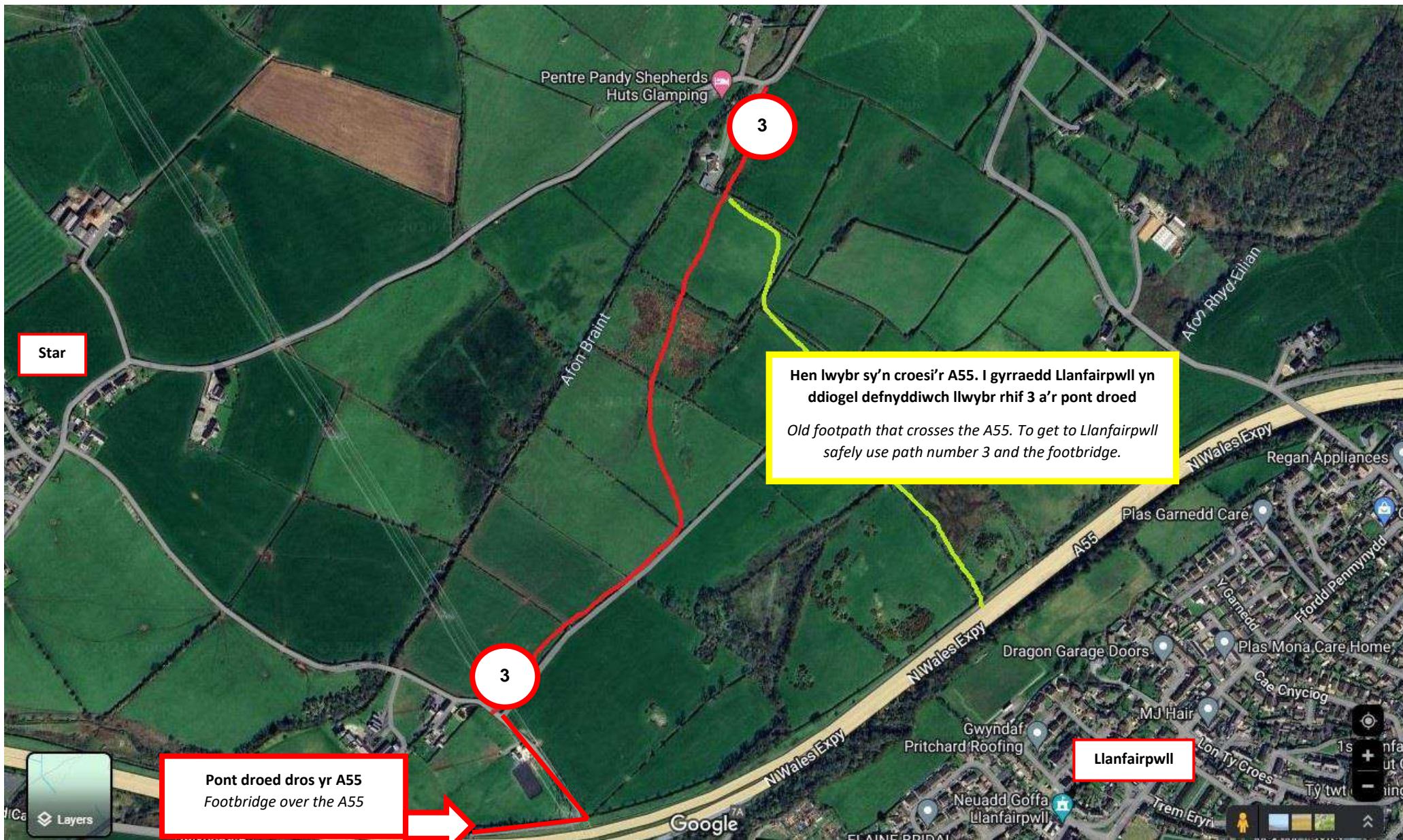
Afon Braint

Anglesey Vintage Equipment Society

NI Wales Expy Sholly's Pet Pals

Google

100 m



Star

**Hen lwybr sy'n croesi'r A55. I gyrraedd Llanfairpwll yn ddiogel defnyddiwch llwybr rhif 3 a'r pont droed**  
*Old footpath that crosses the A55. To get to Llanfairpwll safely use path number 3 and the footbridge.*

**Pont droed dros yr A55**  
*Footbridge over the A55*

Llanfairpwll

Pentre Pandy Shepherds Huts Glamping

Afon Braint

Afon Rhyd-Eilian

NiWales Expy  
A55

Regan Appliances

Plas Garnedd Care

Dragon Garage Doors

Plas Mona Care Home

Gwyndaf Pritchard Roofing

MJ Hair

Neuadd Goffa Llanfairpwll

Trem Eryn

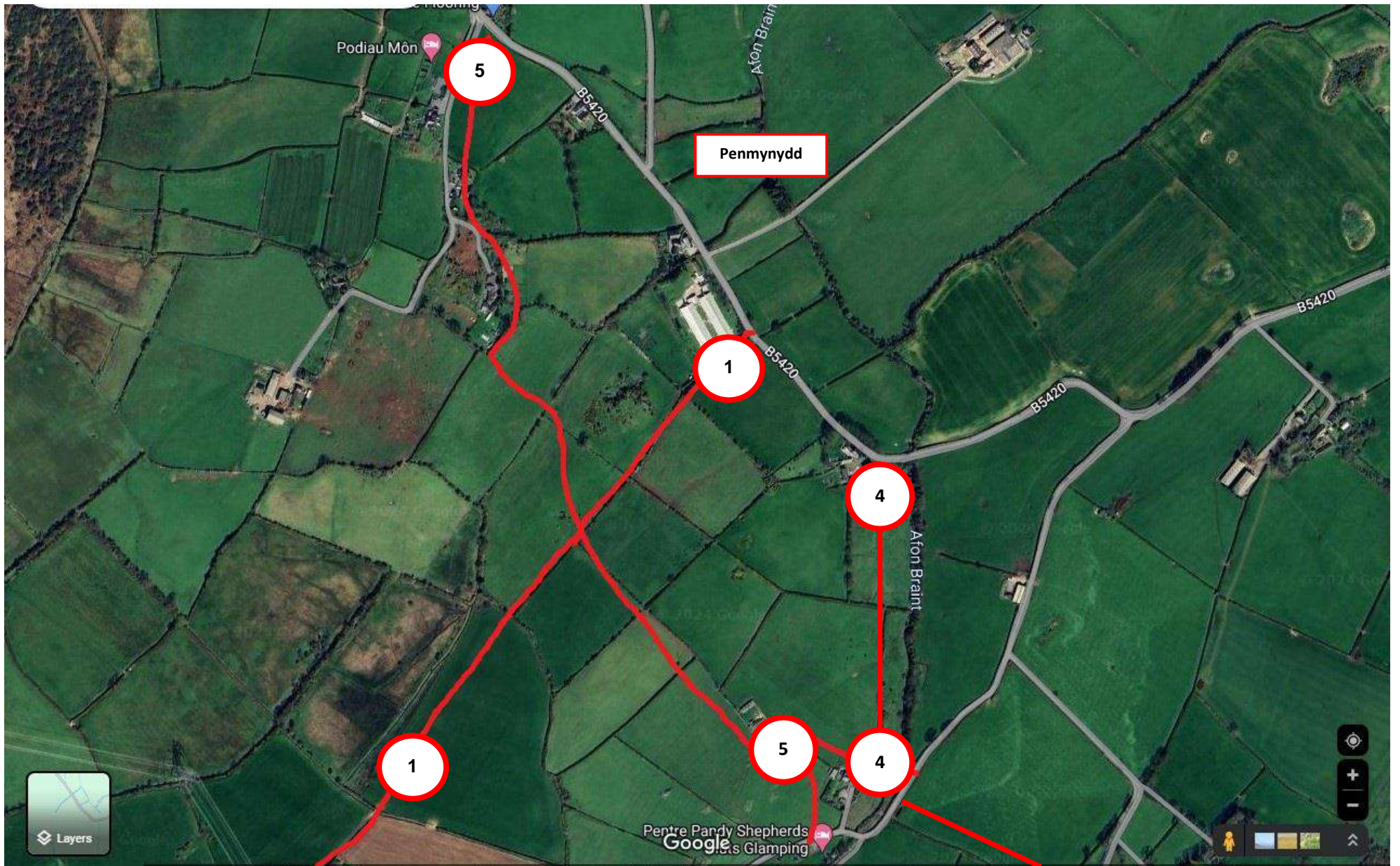
Lon Ty Croes

Ty twt

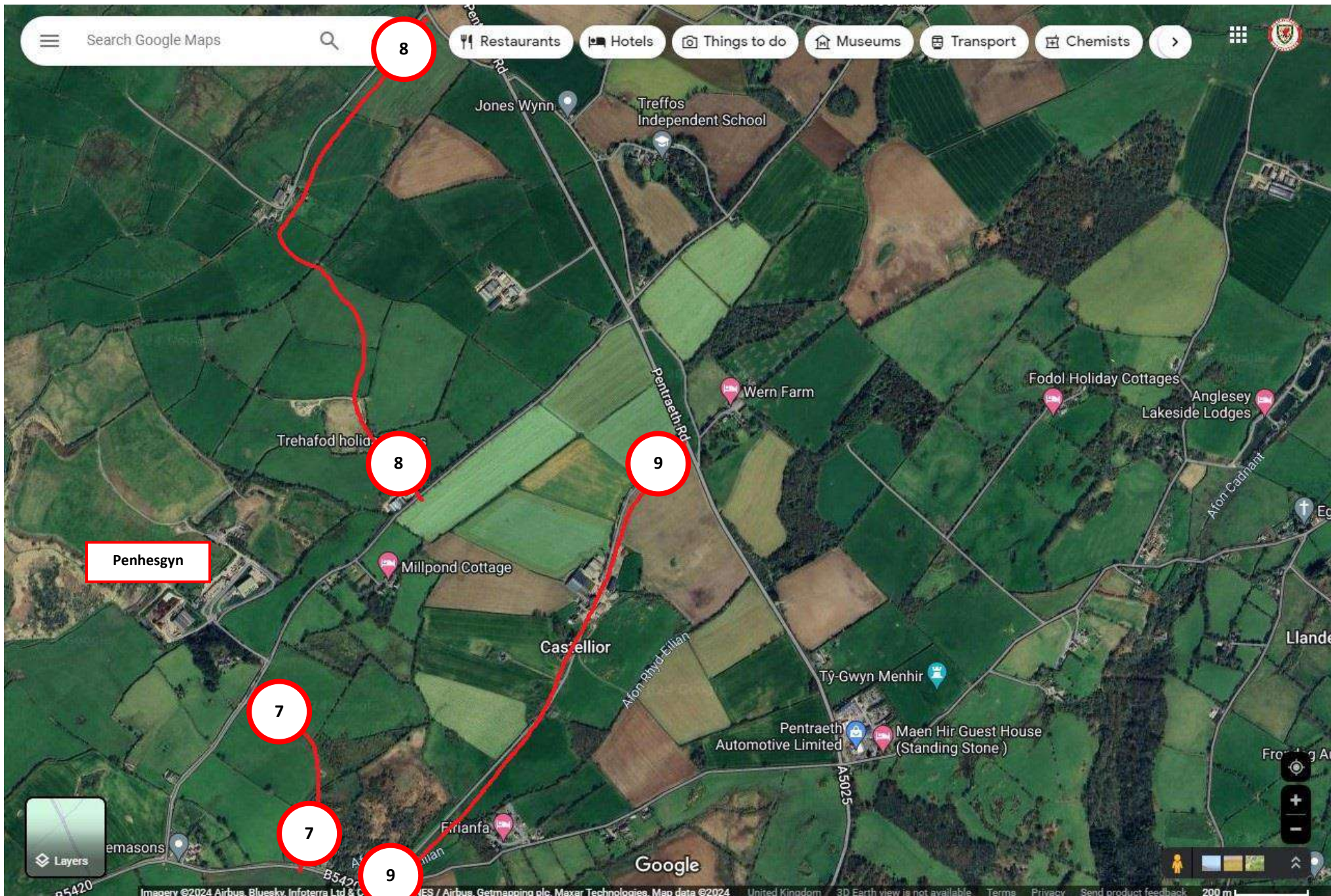
Google











Penrhynog

8

8

9

7

7

9